

MUNICIPAL DISTRICT OF BIGHORN NO. 8

BYLAW No. 09/16

A BYLAW FOR THE PURPOSE OF AUTHORIZING THE COUNCIL FOR THE MUNICIPAL DISTRICT OF BIGHORN NO. 8 TO ESTABLISH ASSESSMENT SUB-CLASSES WITHIN CLASS 1, REFERRED TO AS RESIDENTIAL ASSESSMENT, IN ACCORDANCE WITH THE MUNICIPAL GOVERNMENT ACT OF ALBERTA, CHAPTER M-26, RSA 2000, AS AMENDED.

WHEREAS pursuant to the provision of Section 297(2)(a) of the Municipal Government Act, being Chapter M-26, RSA 2000 as amended, a Council may by bylaw divide class 1 into sub-classes on any basis it considers appropriate.

AND WHEREAS Bylaw No. 01/05 established Class 1 Residential Assessment into six assessment sub-classes as follows:

- Bow Corridor Residential
- Sibbald Residential
- North Ranchlands Residential
- South Ranchlands Residential
- Hamlet Vacant Residential
- All Other Residential Properties

AND WHEREAS the Council of the Municipal District of Bighorn wishes to establish subsequent sub-classes for Class 1;

NOW THEREFORE the Municipal Council of the Corporation of the Municipal District of Bighorn No. 8 in the Province of Alberta, duly assembled in Council, hereby enact as follows:

1. That Class 1 – Residential Assessment be divided into assessment sub-classifications as follows:
 - Bow Valley Rural: all residential lands and improvements within Townships 24 and 25 in Ranges 8 – 11, west of the Fifth Meridian, excepting thereout residential lands and improvements within the Hamlets of Dead Man's Flats, Exshaw, Harvie Heights, and Lac Des Arcs.
 - Hamlet of Benchlands: all residential lands and improvements within the defined boundaries of the Hamlet of Benchlands.
 - Hamlet of Dead Man's Flats: all residential lands and improvements within the defined boundaries of the Hamlet of Dead Man's Flats.

- Hamlet of Exshaw: all residential lands and improvements within the defined boundaries of the Hamlet of Exshaw.
 - Hamlet of Harvie Heights: all residential lands and improvements within the defined boundaries of the Hamlet of Harvie Heights.
 - Hamlet of Lac Des Arcs: all residential lands and improvements within the defined boundaries of the Hamlet of Lac Des Arcs.
 - North Ranchlands: all residential lands and improvements within Townships 28-31 in Ranges 6-11, west of the Fifth Meridian.
 - South Ranchlands: all residential lands and improvements within Townships 26 and 27 in Ranges 5-11, west of the Fifth Meridian, excepting thereout residential lands and improvements within the Hamlet of Benchlands.
 - West Jumping Pound: all residential lands and improvements within Townships 24 and 25 in Ranges 6-7, west of the Fifth Meridian.
2. That Municipal District of Bighorn No. 8 Bylaw No. 01/05 be repealed
 3. Schedules 1 through 6 are hereby attached to Bylaw 09/16 to outline designated boundaries of aforementioned sub classifications.
 4. This Bylaw shall come into full force and effect upon receiving third reading and being passed by the by the Council for the Municipal District of Bighorn No. 8.

READ A FIRST TIME THIS 11th DAY OF OCTOBER, 2016

READ A SECOND TIME THIS 11th DAY OF OCTOBER, 2016

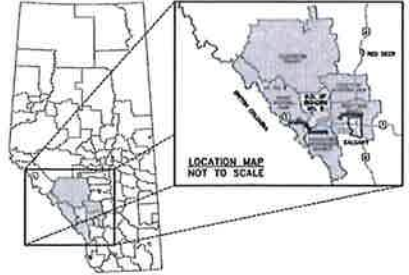
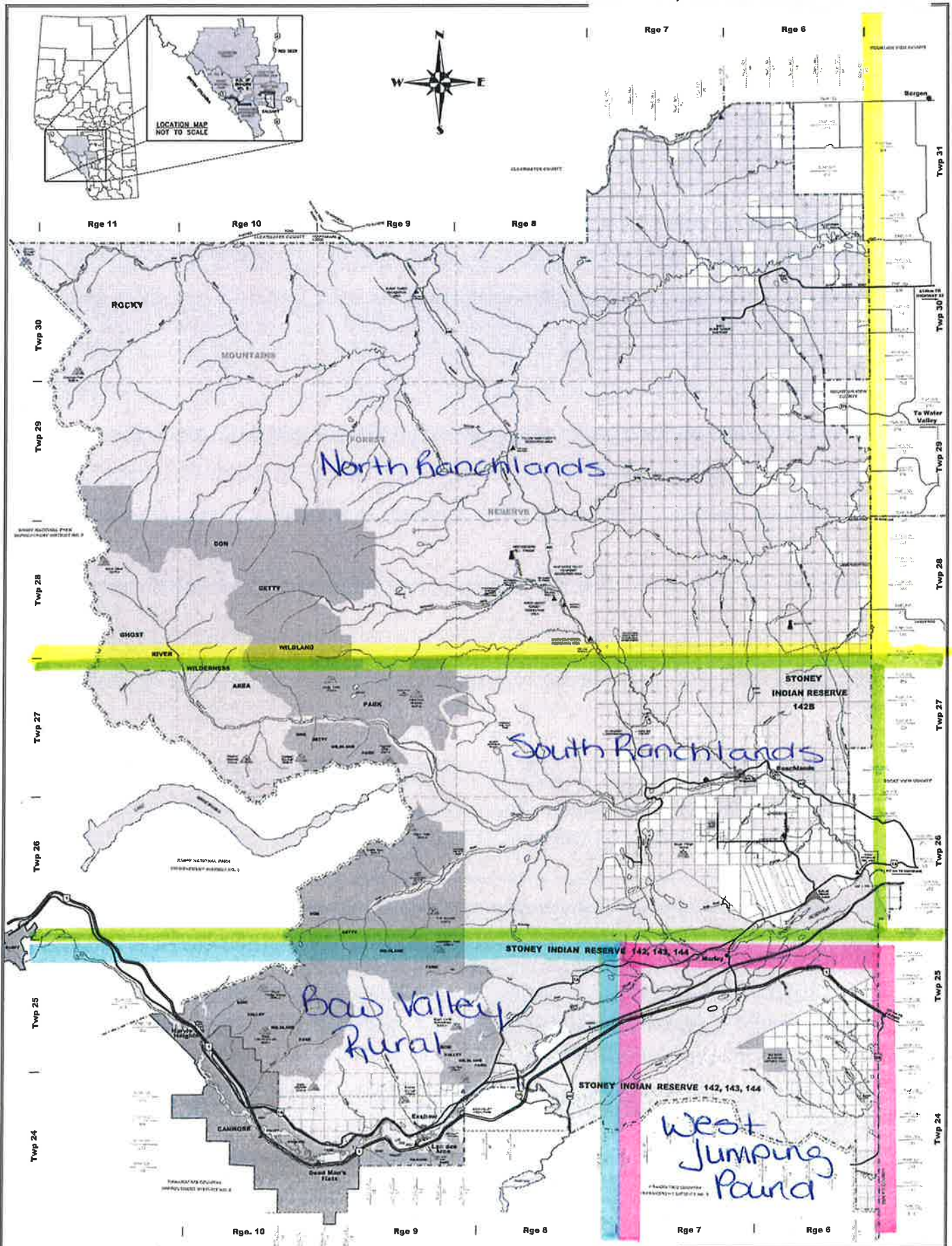
READ A THIRD TIME THIS 11th DAY OF OCTOBER, 2016



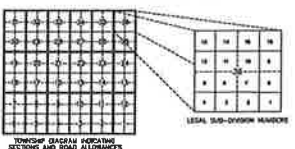
REEVE



EXECUTIVE ASSISTANT



TYPICAL TOWNSHIP LAYOUT



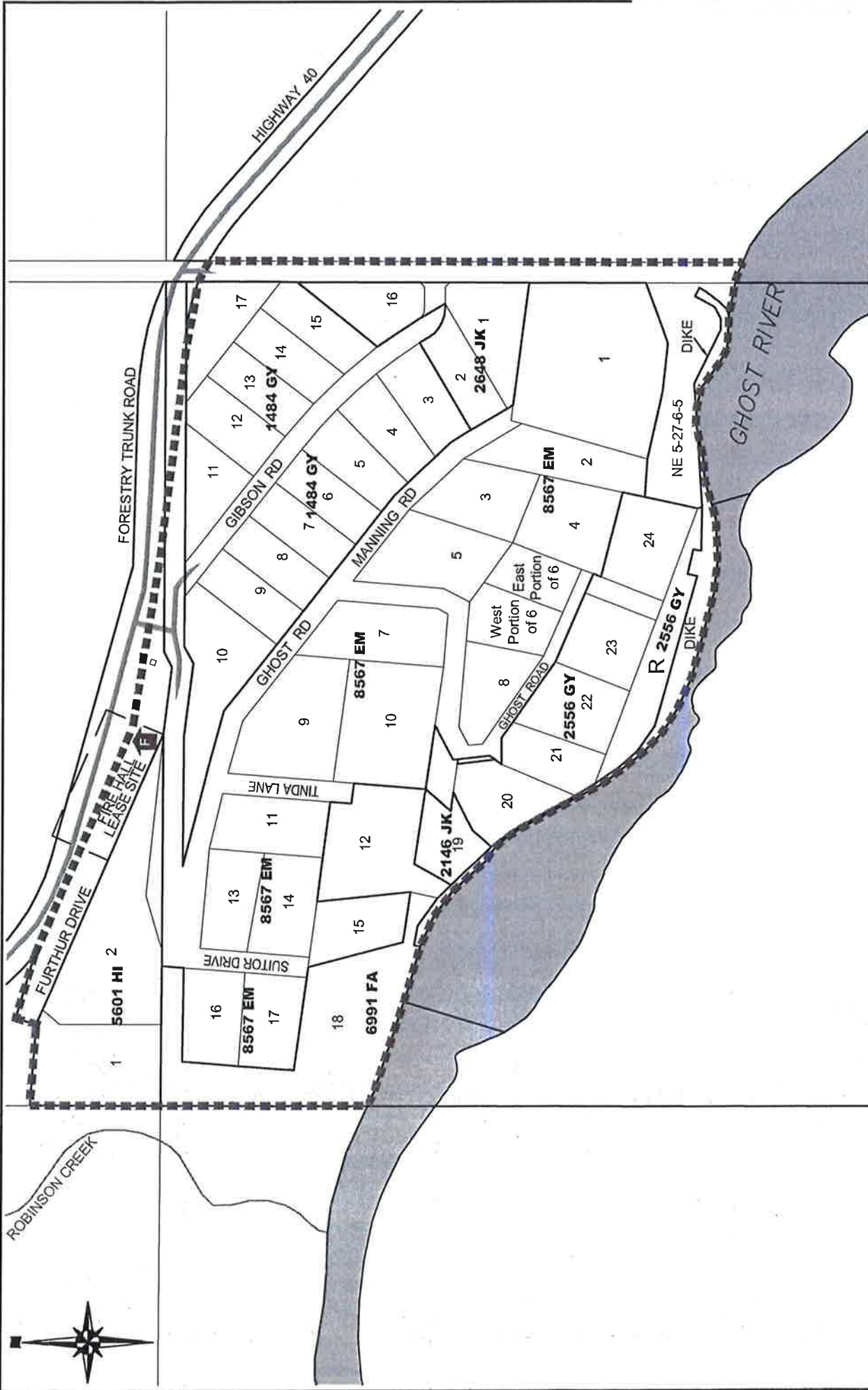
LEGEND

TRAIL-CHUCKLE HONEY	FORESTY TOWER	WILKINSON
PRIMARY HIGHWAY - PAVED	CAMPFIRE	INDIAN RESERVE
PRIMARY HIGHWAY - GRAVEL	TRAIL HALL	FREEDLAND LANE
SECONDARY HIGHWAY - GRAVEL	INDUSTRIAL	CROWN LAND
ROAD SERVICE	RECREATION	LEASED OPEN LAND
PROPOSED	RETAIL/WAREHOUSE	PROTECTED AREAS
OTHER ROAD	WHITE SHAPED STATION	PROFICIAL RECREATION AREA
U.S. BOUNDARY	WET LANDFILL SITE	NATURAL AREA
FOREST RESERVE BOUNDARY		WILDERNESS AREA
RAILWAY		WILDLAND AREA
		PROFICIAL PARK

MUNICIPAL DISTRICT OF BIGHORN NO. 8
2014 LAND OWNERSHIP MAP
 WEST OF THE FIFTH MERIDIAN - ALBERTA

SCALE 1:100,000

Copyright: Municipal District of Bighorn No. 8. All rights reserved. This map is to be viewed on screen or in print. 2014.



UTM NAD83



BASE MAP PROVIDED BY ALTAUS DATE: November 19, 2012
 The Municipal District of Bighorn No. 8 provides this information in good faith but provides no warranty nor accepts any liability arising from incorrect, incomplete or misleading information or its improper use.

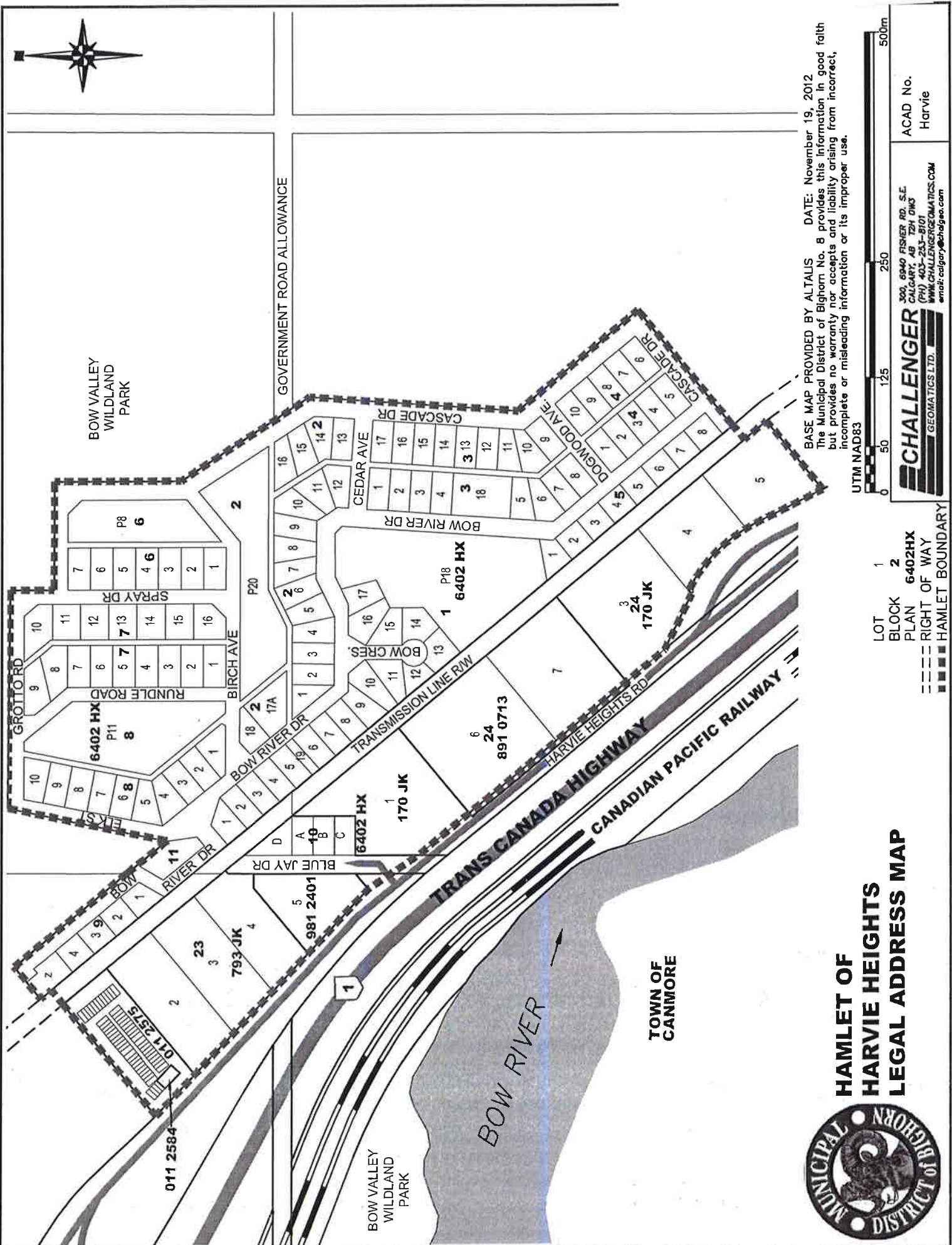
- LOT 1
- PLAN 5601HI
- RIGHT OF WAY
- HAMLET BOUNDARY
- FIRE HALL

HAMLET OF BENCHLANDS LEGAL ADDRESS MAP



CHALLENGER
 GEOMATICS LTD.
 300, 6940 FISHER RD. S.E.
 CALGARY, AB T2H 0M3
 (PH) 403-263-8101
 WWW.CHALLENGERGEOMATICS.COM
 email: calgary@challenger.com

ACAD No. Benchlands



BASE MAP PROVIDED BY ALTALIS DATE: November 19, 2012
 The Municipal District of Bighorn No. 8 provides this information in good faith but provides no warranty nor accepts and liability arising from incorrect, incomplete or misleading information or its improper use.

UTM NAD83



- 1 LOT
- 2 BLOCK
- PLAN 6402HX
- RIGHT OF WAY
- HAMLET BOUNDARY

CHALLENGER
 GEOMATICS LTD.
 100, 6949 FISHER RD. S.E.
 CALGARY, AB T2H 0N6
 (PH) 403-253-8101
 WWW.CHALLENGERGEOMATICS.COM
 email: calgary@challenger.com

ACAD No.
 Harvie



HAMLET OF HARVIE HEIGHTS LEGAL ADDRESS MAP

TOWN OF CANMORE

BOW VALLEY WILDLAND PARK

BOW VALLEY WILDLAND PARK

BOW RIVER

TRANS CANADA HIGHWAY
 CANADIAN PACIFIC RAILWAY

GOVERNMENT ROAD ALLOWANCE

011 2584

011 2575

793 JK

981 2401

6402 HX

170 JK

891 0713

6402 HX

170 JK

6402 HX

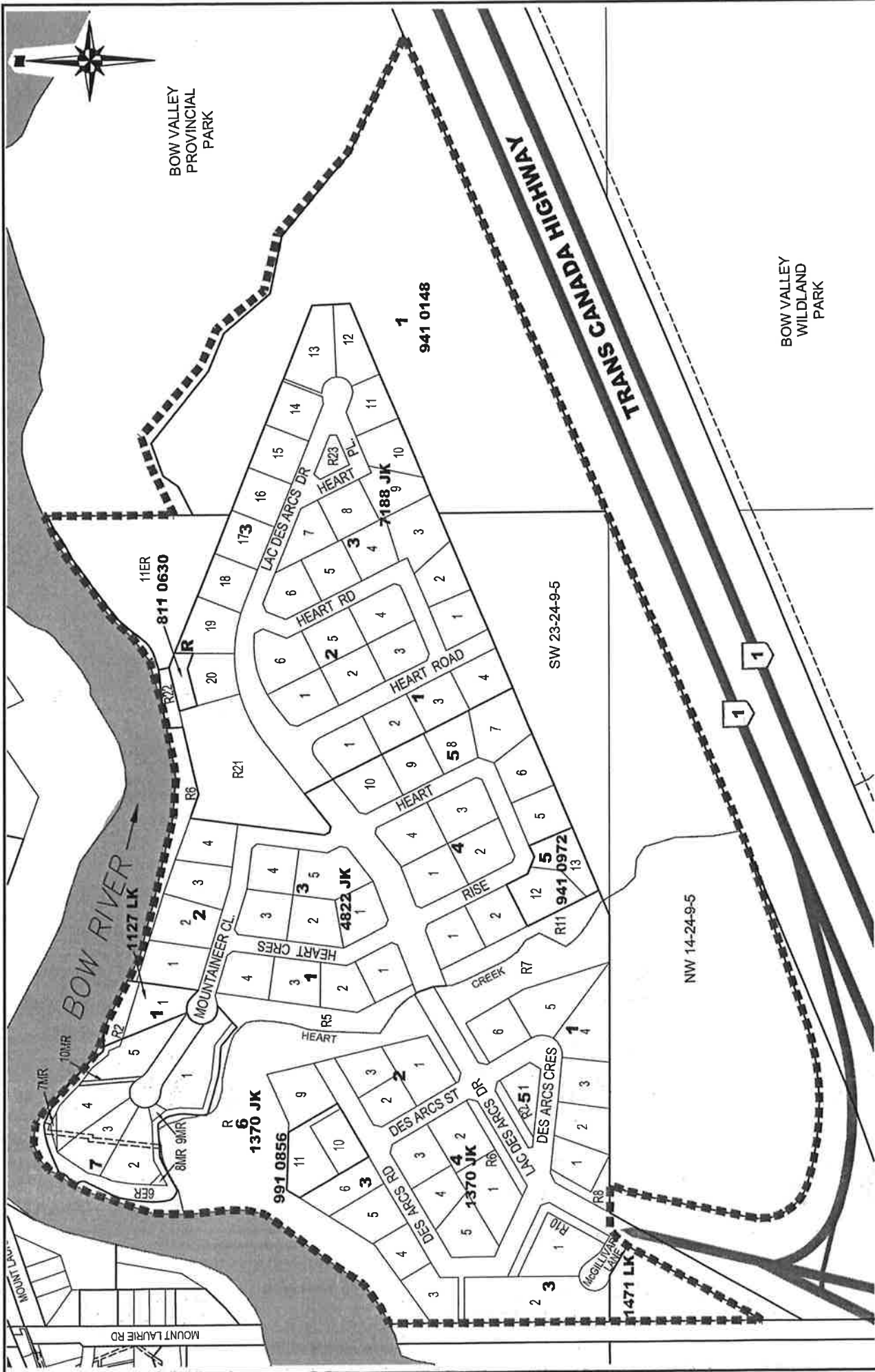
170 JK

6402 HX

170 JK

6402 HX

170 JK



UTM NAD83



DATE: November 19, 2012
 BASE MAP PROVIDED BY ALTAUS
 The Municipal District of Bighorn No. 8 provides this information in good faith but provides no warranty nor accepts any liability arising from incorrect, incomplete or misleading information or its improper use.

CHALLENGER
 GEOMATICS LTD.
 300, 6940 FISHER RD. S.E.
 CALGARY, AB T2H 0M3
 (PH) 403-253-8101
 WWW.CHALLENGERGEOMATICS.COM
 email: calgary@challenger.com

ACAD No.
 Lac-Des-Arcs

**HAMLET OF
 LAC DES ARCS
 LEGAL ADDRESS MAP**



- LOT 1
- BLOCK 2
- PLAN 4822 JK
- RIGHT OF WAY
- HAMLET BOUNDARY

SW 23-24-9-5

NW 14-24-9-5

BOW VALLEY
 PROVINCIAL
 PARK

BOW VALLEY
 WILDLAND
 PARK

MOUNT LAURIE RD