



MUNICIPAL DISTRICT OF BIGHORN

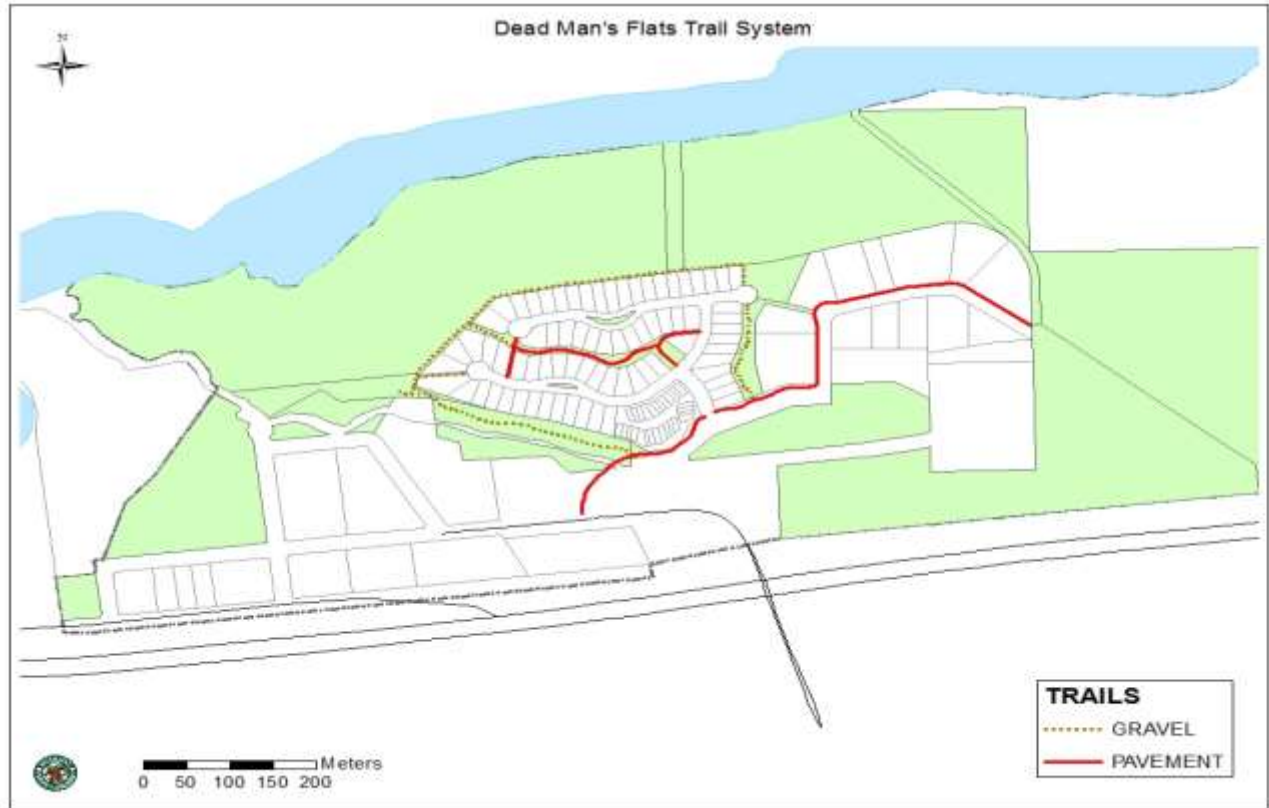
Trail Development and Management Guidelines

Approved: November, 2009
Updated: January 10, 2017

Appendix C

Trail Inventory

Dead Man's Flats Trail System



Trail Type: Asphalt and Gravel Surfaced Community Trails

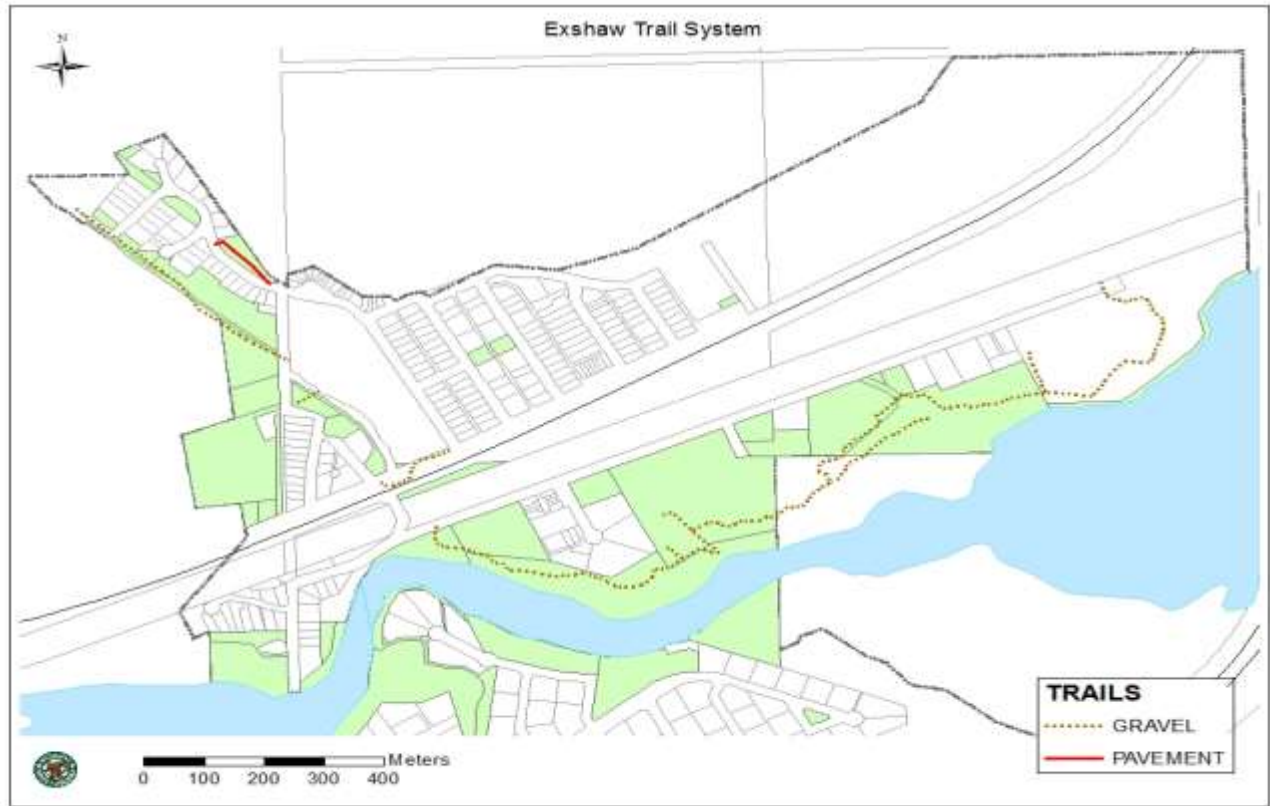
Classification/Level: Class I Walking. Easiest

Length: Varies on route taken.

General Description: Gravel surfaced trail along the east side of Pigeon Creek. Asphalt and gravel surfaced trails located in the River's Bend subdivision, with an asphalt trail extending from the subdivision to the Pigeon Creek trail and 2nd Street. No elevation gains/losses.

Special Features: No natural or man-made trail features present.

Exshaw Trail System



Trail Type: Gravel or Natural Surface Community Hiking Trails

Classification/ Level: Class II Walking, Easy

Length: 2.9 km (South Exshaw Trail)

General Description: South Exshaw Trail roughly follows the north bank of the Bow River starting at Exshaw Creek with three access trails, two south of the west sewage lagoon, and one from the campground. The trail ends at Exshaw Recreation Grounds. Trail users can walk along Diamond Drive to return to the community.

There is a Caretaker Agreement between the MD, Exshaw Community Association and Alberta Environment and Parks that requires the MD to maintain the trail. The Agreement is in effect until December 31, 2020.

Special Features: Parking area is available on Diamond Drive beside sewage lagoon and at the Exshaw Recreation Grounds. There is signage and several bridge structures along the trail.

Trail Name: Exshaw Creek Trail

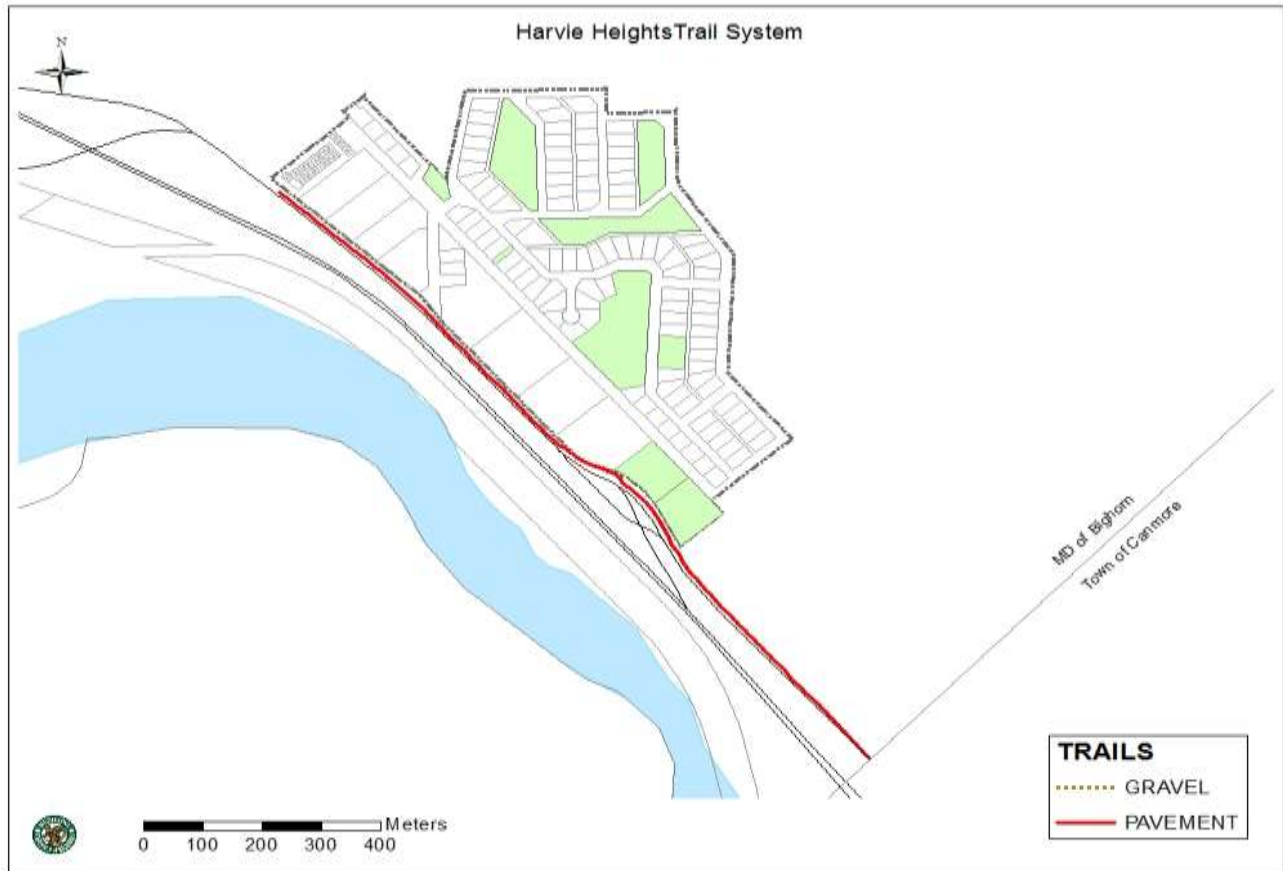
Classification/Level: Class II Walking. Easy

Length: 0.5 km on municipal land.

General Description: Trail follows the east side of Exshaw Creek. Trail continues north up Exshaw Creek and leaves the hamlet. Bridge crossing at Exshaw Creek from Mt. Allan Drive (near Firehall) to east side of creek on Lafarge lands. Multiple informal trails through private land connect to the Exshaw Creek Trail.

Special Features: No natural or man-made trail features present. Parking area is available on Mt. Allen Drive beside fire hall.

Harvie Heights Trail System



Trail Type: Walking, Roller Skiing, Running, Biking

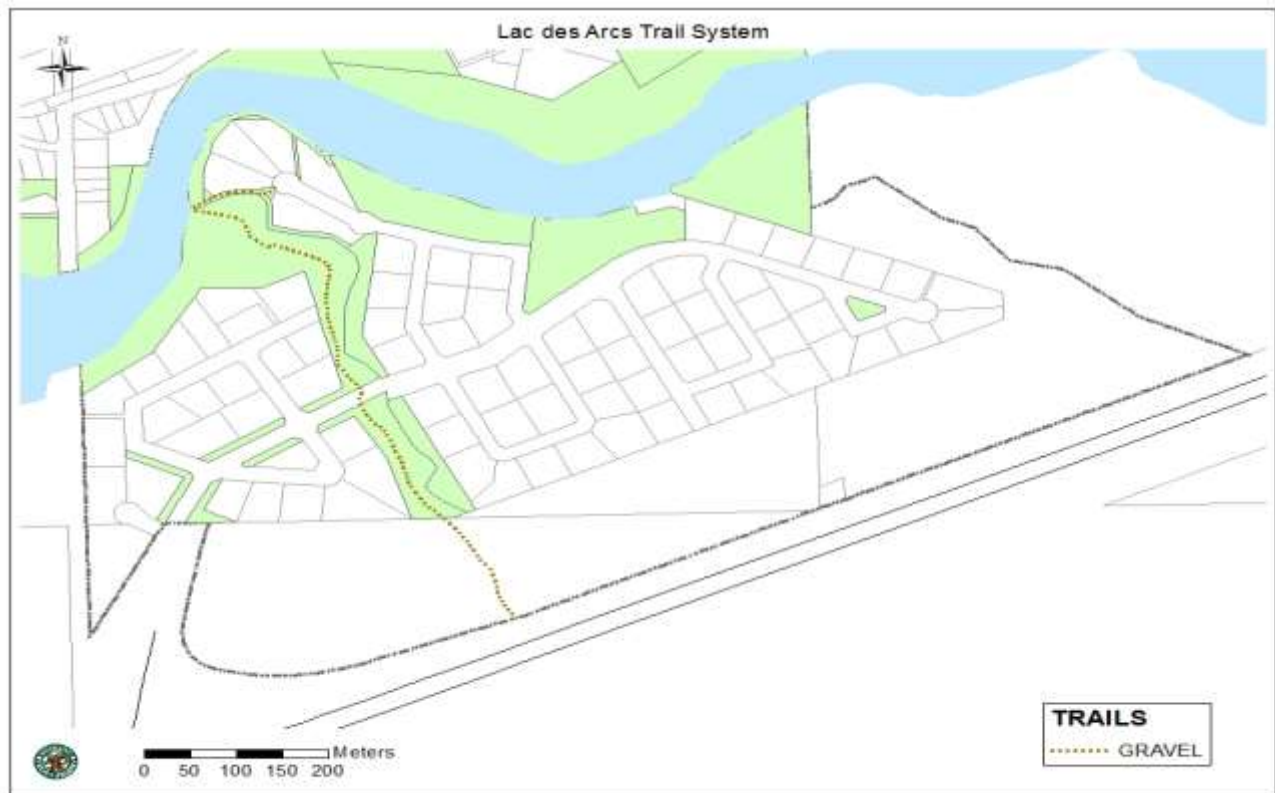
Classification/Level: Class I Walking. Easiest

Length: 1.3 km

General Description: This is an asphalt double width trail located on the southern hamlet boundary of Harvie Heights and the MD. The trail connects to the eastern portion of the trail located within the Town of Canmore boundary and to the western edge of the hamlet boundary.

Special Features: None. However, users should be aware that several driveway entrances in Harvie Heights extend onto the trail. There are no steep grades or significant levels. No natural or man-made trail features present.

Lac des Arcs Trail System



Trail Type: Natural Surface Community Hiking Trail

Classification/Level: Class II Walking. Easy

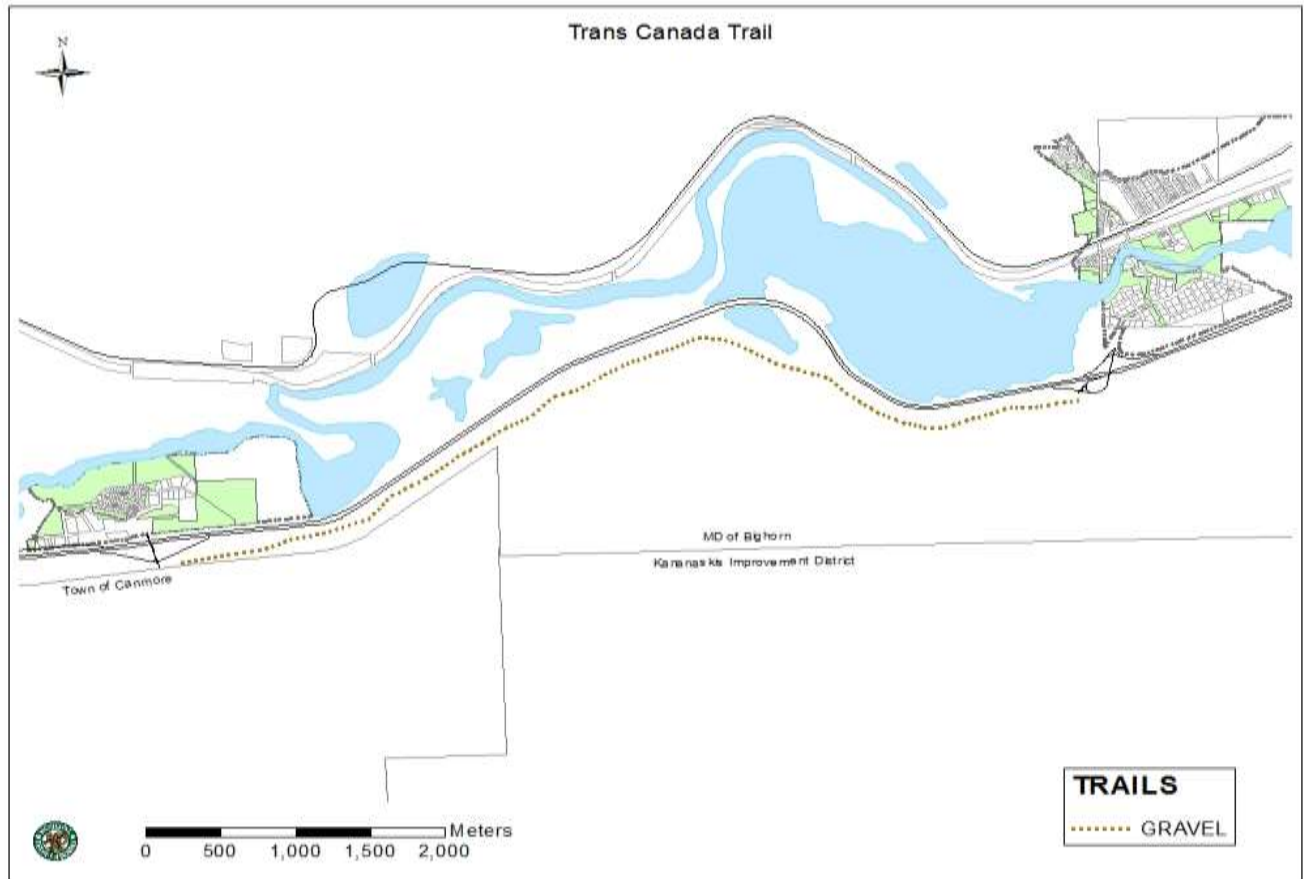
Length: 1 km

General Description: Trail travels north and south from Des Arcs Drive along the west side of Heart Creek. The trail provides access to the Bow River, Des Arcs Drive and Mountaineer Close. No sustained elevation gains.

Special Features: There are a set of stairs accessing the portion of trail to the north of Des Arcs Drive. There are no other trail features or improvements of note.

Note: Portions of the trail were damaged in the 2013 flood. Future flood protection measures may change the alignment of the trail and its connections to Des Arcs Drive and Mountaineer Close.

Trans Canada Trail System



Trail Type: Natural Hiking and Mountain Biking Trail

Classification/Level: Class II Hiking/Class IV Mountain Bike. Very Difficult-Mountain Biking. More Difficult-Hiking

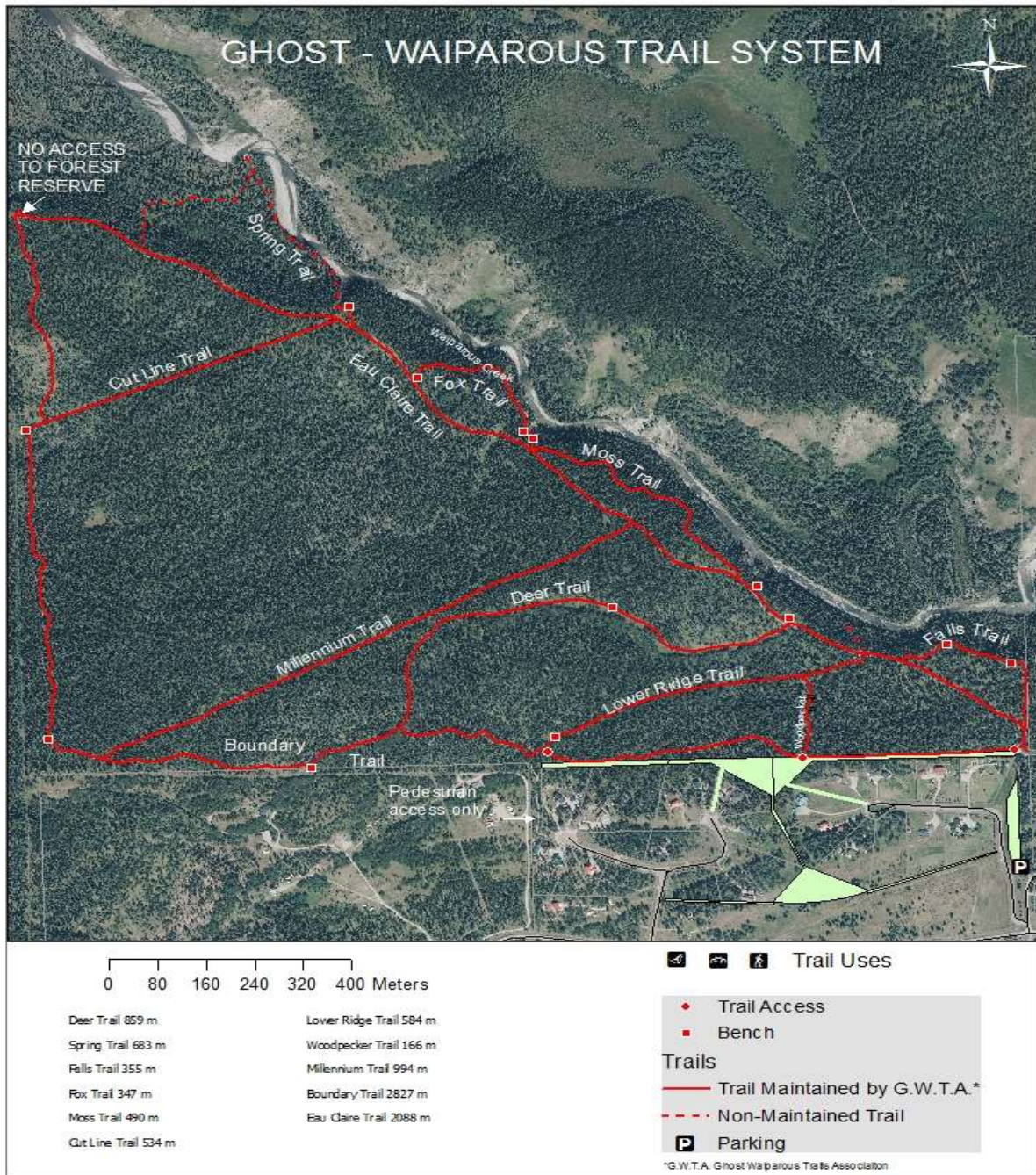
Length: 8 km

General Description: Trail follows along north face within 200m of Trans-Canada Highway in most sections. Surface is natural, uneven with some sections of loose rock, exposed roots and narrow tread. Some sections are adjacent to steep drops.

The MD has a 25-year License of Occupation (LOC 961491) for the Trans Canada Trail with Alberta Environment and Parks for the purposes of a recreation trail for hiking and cycling. The LOC expires on April 28, 2024.

Special Features: Portions of the TransCanada Trail were damaged in the 2013 flood resulting in some routing changes and removal of some trail infrastructure (bridges, stairways, signage, etc.). There are also a couple of natural technical features, including rock face drops and narrow tread with steep drop-offs.

Ghost-Waiparous Trail System – Recreation Lease 950011



Trail Type: Natural Surface Trail System.

Trail Name: Ghost Waiparous Trails or Back 40

Classification/Level: Class II Walking. Easy

Length: variable depending on trail chosen

General Description: Rural community trail system managed through a Caretaker Agreement by a local trails organization. Recreation Lease held jointing between the Summer Village of Waiparous and the MD of Bighorn.

There is a Recreational Land Caretaker Agreement between the MD, Summer Village of Waiparous, and the Ghost Waiparous Trails Association (GWTA) that requires the GWTA to maintain the trails in the Ghost/Waiparous Trail System – Recreation Lease 950011. The Caretaker Agreement is in effect until September 30, 2021.

Special Features: A series of wooden benches are strategically placed throughout the trail system. Eau Claire trail is also an access route for fire vehicles, it is gravel and is maintained to a higher standard. Vehicles are allowed on this trail/road only for collecting firewood under permit.